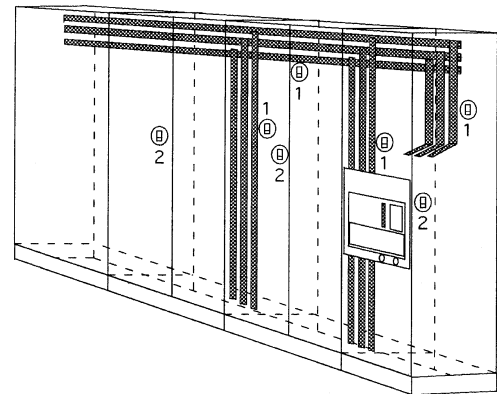
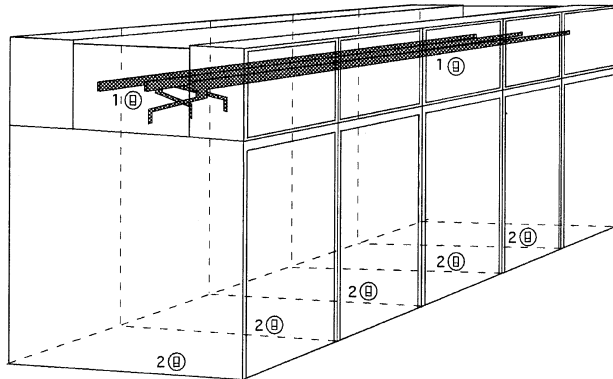


# Arc Detecting and Protection System



The SELCO Arc Detecting and Protection System is based on experience with arc protection since 1962. The system units are built into boxes that all fit on a 35 mm DIN-rail. All front plates are dimensioned to fit into the 45 mm slot in the cover plates of a DIN-system.

The Arc Detecting Relay is connected to light sensitive detectors suitably placed in the various cubicles or drawers inside the switchboard. The Overcurrent Relay is used if overcurrent as well.



## Arc Detecting Relay/ Current Relay/Time Relay

To be placed in the switchboard or in connection with it. It is recommended that the Arc Detecting Relay, the Current Relay and the Time Relay are installed in the relay box or otherwise separated from the circuit breaker to be tripped.

## Junction Box for Parallel connection

To be installed considering the length of the detector cables (5 metres). Junction boxes with indication are installed so that the LED's are fully visible. Max. 2 junction boxes per Arc Detecting Relay.

## Arc Detectors

Installation: 1-2 pcs. per cubicle or drawer, see drawings on page 4. At horizontal/vertical bus bars (1) and in breaker/cable compartments (2).